



# 2020 CATALOG



INNOVATION|AT THE CORE™



## 2 **HYDRAULIC AUGER DRIVES**

LC-SERIES	2
M-SERIES	3
H-SERIES	4
HTLS-SERIES	5
EQUIPMENT MOUNTS	6
HOSE KITS	8
AUGER EXTENSIONS	9
DRIVE ADAPTERS	9

## 10 **AUGER SOLUTIONS**

DCA-SERIES	10
SDA-SERIES	11
BHD-SERIES	12
BULLET SERIES	13
SPIRAL SERIES	13
TREE AND SHRUB AUGERS	14
PUFF AUGERS	14
CONSUMABLES	14
PRICING GUIDE	14

## 15 **TM-48 BELLTEC DIGGER**

## 16 **LIMITED WARRANTY**

# HYDRAULIC AUGER DRIVES

Belltec offers a complete four-series lineup of hydraulic auger drives to meet the performance needs of modern equipment operators. Constructed with highest-quality components, expect years of top performance and reliability backed with the best warranty on the market.



## LC-SERIES

**HARD-HITTING,  
SUB-COMPACT DESIGN**



## M-SERIES

**CONDENSED POWER  
& PERFORMANCE**



## H-SERIES

**PREMIUM FEATURES  
& PERFORMANCE**



## HTLS-SERIES

**EXTREME TORQUE &  
SEVERE CONDITIONS**



## LC-150

113130  
113130-KIT

Dimensions (Drive only)	10 x 10 x 28 in	Gear Train Type	Planetary
Weight Drive/Kit	150 lbs/277 lbs	Min./Max. Flow	6-15 GPM
Output Shaft Size	2-in Hex	Max. Continuous PSI	3000 PSI
Max. Dia. Dirt/Rock	18 in/18 in	Max. Intermittent PSI	3500 PSI

SPEED OUTPUT*		TORQUE OUTPUT*	
6 GPM	36 RPM	2000 PSI	1008 ft. lbs.
10 GPM	61 RPM	2500 PSI	1260 ft. lbs.
15 GPM	91 RPM	3000 PSI	1512 ft. lbs.
20 GPM	—	3500 PSI	1764 ft. lbs.

### 113130 Includes:

Auger drive only. Attachment platform & hose kit not included.

### 113130-KIT Includes:

- LC-150 Hydraulic Auger Drive (113130)
- Belltec Universal Skid-steer Mount (QT100)
- 1/2" x 96" Hose Kit with Faster Flat Face Couplings (111385)

\*All values are theoretical. Actual performance may vary.



## LC-200

113131  
113131-KIT

Dimensions (Drive only)	10 x 10 x 28 in	Gear Train Type	Planetary
Weight Drive/Kit	150 lbs/277 lbs	Min./Max. Flow	10-20 GPM
Output Shaft Size	2-in Hex	Max. Continuous PSI	3000 PSI
Max. Dia. Dirt/Rock	30 in/24 in	Max. Intermittent PSI	3500 PSI

SPEED OUTPUT*		TORQUE OUTPUT*	
10 GPM	53 RPM	2000 PSI	1165 ft. lbs.
15 GPM	79 RPM	2500 PSI	1456 ft. lbs.
20 GPM	105 RPM	3000 PSI	1747 ft. lbs.
25 GPM	—	3500 PSI	2038 ft. lbs.

### 113131 Includes:

Auger drive only. Attachment platform & hose kit not included.

### 113131-KIT Includes:

- LC-200 Hydraulic Auger Drive (113131)
- Belltec Universal Skid-steer Mount (QT100)
- 1/2" x 96" Hose Kit with Faster Flat Face Couplings (111385)

\*All values are theoretical. Actual performance may vary.







## LC-300

113132  
113132-KIT

Dimensions (Drive only)	10 x 10 x 28 in	Gear Train Type	Planetary
Weight Drive/Kit	150 lbs/277 lbs	Min./Max. Flow	15-30 GPM
Output Shaft Size	2-in Hex	Max. Continuous PSI	3000 PSI
Max. Dia. Dirt/Rock	36 in/36 in	Max. Intermittent PSI	3500 PSI

SPEED OUTPUT*		TORQUE OUTPUT*	
15 GPM	55 RPM	2000 PSI	1674 ft. lbs.
20 GPM	73 RPM	2500 PSI	2092 ft. lbs.
25 GPM	92 RPM	3000 PSI	2511 ft. lbs.
30 GPM	110 RPM	3500 PSI	2929 ft. lbs.

### 113132 Includes:

- Auger drive only. Attachment platform & hose kit not included.

### 113132-KIT Includes:

- LC-300 Hydraulic Auger Drive (113132)
- Belltec Universal Skid-steer Mount (QT100)
- 1/2" x 96" Hose Kit with Faster Flat Face Couplings (111385)

\*All values are theoretical. Actual performance may vary.



## LC-350

113133  
113133-KIT

Dimensions (Drive only)	10 x 10 x 28 in	Gear Train Type	Planetary
Weight Drive/Kit	151 lbs/278 lbs	Min./Max. Flow	20-35 GPM
Output Shaft Size	2-in Hex	Max. Continuous PSI	3000 PSI
Max. Dia. Dirt/Rock	36 in/36 in	Max. Intermittent PSI	3500 PSI

SPEED OUTPUT*		TORQUE OUTPUT*	
20 GPM	61 RPM	2000 PSI	2016 ft. lbs.
25 GPM	76 RPM	2500 PSI	2520 ft. lbs.
30 GPM	91 RPM	3000 PSI	3025 ft. lbs.
35 GPM	106 RPM	3500 PSI	3529 ft. lbs.

### 113133 Includes:

- Auger drive only. Attachment platform & hose kit not included.

### 113133-KIT Includes:

- LC-350 Hydraulic Auger Drive (113133)
- Belltec Universal Skid-steer Mount (QT100)
- 1/2" x 96" Hose Kit with Faster Flat Face Couplings (111385)

\*All values are theoretical. Actual performance may vary.



## M-200

113028  
113086 (KIT)

Dimensions (Drive only)	11 x 11 x 31 in	Gear Train Type	Planetary
Weight Drive/Kit	159 lbs/286 lbs	Min./Max. Flow	10-20 GPM
Output Shaft Size	2-in Hex	Max. Continuous PSI	3000 PSI
Max. Dia. Dirt/Rock	30 in/24 in	Max. Intermittent PSI	3500 PSI

SPEED OUTPUT*		TORQUE OUTPUT*	
10 GPM	43 RPM	2000 PSI	1420 ft. lbs.
15 GPM	65 RPM	2500 PSI	1776 ft. lbs.
20 GPM	86 RPM	3000 PSI	2131 ft. lbs.
25 GPM	—	3500 PSI	2486 ft. lbs.

### 113028 Includes:

- Auger drive only. Attachment platform & hose kit not included.

### 113086 Includes:

- M-200 Hydraulic Auger Drive (113028)
- Belltec Universal Skid-steer Mount (QT100)
- 1/2" x 96" Hose Kit with Faster Flat Face Couplings (111385)

\*All values are theoretical. Actual performance may vary.



## M-300

113029  
113087 (KIT)

Dimensions (Drive only)	11 x 11 x 31 in	Gear Train Type	Planetary
Weight Drive/Kit	162 lbs/288 lbs	Min./Max. Flow	15-30 GPM
Output Shaft Size	2-in Hex	Max. Continuous PSI	3000 PSI
Max. Dia. Dirt/Rock	36 in/36 in	Max. Intermittent PSI	3500 PSI

SPEED OUTPUT*		TORQUE OUTPUT*	
15 GPM	45 RPM	2000 PSI	2041 ft. lbs.
20 GPM	60 RPM	2500 PSI	2550 ft. lbs.
25 GPM	75 RPM	3000 PSI	3062 ft. lbs.
30 GPM	90 RPM	3500 PSI	3572 ft. lbs.

### 113029 Includes:

- Auger drive only. Attachment platform & hose kit not included.

### 113087 Includes:

- M-300 Hydraulic Auger Drive (113029)
- Belltec Universal Skid-steer Mount (QT100)
- 1/2" x 96" Hose Kit with Faster Flat Face Couplings (111385)

\*All values are theoretical. Actual performance may vary.





## M-350

113030  
113088 (KIT)

Dimensions (Drive only)	11 x 11 x 31 in	Gear Train Type	Planetary
Weight Drive/Kit	192 lbs/319 lbs	Min./Max. Flow	20-35 GPM
Output Shaft Size	2-in Hex	Max. Continuous PSI	3000 PSI
Max. Dia. Dirt/Rock	36 in/36 in	Max. Intermittent PSI	3500 PSI

### SPEED OUTPUT\*

20 GPM	50 RPM
25 GPM	62 RPM
30 GPM	75 RPM
35 GPM	87 RPM

### TORQUE OUTPUT\*

2000 PSI	2459 ft. lbs.
2500 PSI	3075 ft. lbs.
3000 PSI	3688 ft. lbs.
3500 PSI	4303 ft. lbs.

#### 113030 Includes:

- Auger drive only. Attachment platform & hose kit not included.

#### 113088 Includes:

- M-350 Hydraulic Auger Drive (113030)
- Belltec Universal Skid-steer Mount (QT100)
- 1/2" x 96" Hose Kit with Faster Flat Face Couplings (111385)

\*All values are theoretical. Actual performance may vary.



## FIELD-SERVICABLE OUTPUT SHAFT



H-Series Hydraulic Auger Drives feature an interchangeable 2-inch hex output shaft (part no. 113300-01) covered by our Belltec Lifetime Part Replacement Program. If this part ever breaks, ship it to us for a free replacement.



## H-200

113001  
113083 (KIT)

Dimensions (Drive only)	11 x 11 x 35 in	Gear Train Type	Planetary
Weight Drive/Kit	183 lbs/310 lbs	Min./Max. Flow	10-20 GPM
Output Shaft Size	2-in Hex	Max. Continuous PSI	3000 PSI
Max. Dia. Dirt/Rock	30 in/24 in	Max. Intermittent PSI	3500 PSI

### SPEED OUTPUT\*

10 GPM	43 RPM
15 GPM	65 RPM
20 GPM	86 RPM
25 GPM	—

### TORQUE OUTPUT\*

2000 PSI	1420 ft. lbs.
2500 PSI	1776 ft. lbs.
3000 PSI	2131 ft. lbs.
3500 PSI	2486 ft. lbs.

#### 113001 Includes:

- Auger drive only. Attachment platform & hose kit not included.

#### 113083 Includes:

- H-200 Hydraulic Auger Drive (113001)
- Belltec Universal Skid-steer Mount (QT100)
- 1/2" x 96" Hose Kit with Faster Flat Face Couplings (111385)

\*All values are theoretical. Actual performance may vary.



## H-300

113014  
113084 (KIT)

Dimensions (Drive only)	11 x 11 x 35 in	Gear Train Type	Planetary
Weight Drive/Kit	185 lbs/312 lbs	Min./Max. Flow	15-30 GPM
Output Shaft Size	2-in Hex	Max. Continuous PSI	3000 PSI
Max. Dia. Dirt/Rock	36 in/36 in	Max. Intermittent PSI	3500 PSI

### SPEED OUTPUT\*

15 GPM	45 RPM
20 GPM	60 RPM
25 GPM	75 RPM
30 GPM	90 RPM

### TORQUE OUTPUT\*

2000 PSI	2041 ft. lbs.
2500 PSI	2550 ft. lbs.
3000 PSI	3062 ft. lbs.
3500 PSI	3572 ft. lbs.

#### 113014 Includes:

- Auger drive only. Attachment platform & hose kit not included.

#### 113084 Includes:

- H-300 Hydraulic Auger Drive (113014)
- Belltec Universal Skid-steer Mount (QT100)
- 1/2" x 96" Hose Kit with Faster Flat Face Couplings (111385)

\*All values are theoretical. Actual performance may vary.





## H-350

113016  
113085 (KIT)

Dimensions (Drive only)	11 x 11 x 35 in	Gear Train Type	Planetary
Weight Drive/Kit	216 lbs/343 lbs	Min./Max. Flow	20-35 GPM
Output Shaft Size	2-in Hex	Max. Continuous PSI	3000 PSI
Max. Dia. Dirt/Rock	36 in/36 in	Max. Intermittent PSI	3500 PSI

SPEED OUTPUT*	
20 GPM	50 RPM
25 GPM	62 RPM
30 GPM	75 RPM
35 GPM	87 RPM

TORQUE OUTPUT*	
2000 PSI	2459 ft. lbs.
2500 PSI	3075 ft. lbs.
3000 PSI	3688 ft. lbs.
3500 PSI	4303 ft. lbs.

### 113016 Includes:

- Auger drive only. Attachment platform & hose kit not included.

### 113085 Includes:

- H-350 Hydraulic Auger Drive (113016)
- Belltec Universal Skid-steer Mount (QT100)
- 1/2" x 96" Hose Kit with Faster Flat Face Couplings (111385)

\*All values are theoretical. Actual performance may vary.



## HTLS-6K

113078  
113092 (KIT)

Dimensions (Drive only)	11 x 11 x 31 in	Gear Train Type	Planetary
Weight Drive/Kit	232 lbs/359 lbs	Min./Max. Flow	6-15 GPM
Output Shaft Size	2-in Hex	Max. Continuous PSI	3000 PSI
Max. Dia. Dirt/Rock	36 in/36 in	Max. Intermittent PSI	3500 PSI

SPEED OUTPUT*	
6 GPM	10 RPM
10 GPM	16 RPM
15 GPM	24 RPM
20 GPM	—

TORQUE OUTPUT*	
2000 PSI	3841 ft. lbs.
2500 PSI	4802 ft. lbs.
3000 PSI	5762 ft. lbs.
3500 PSI	6722 ft. lbs.

### 113078 Includes:

- Auger drive only. Attachment platform & hose kit not included.

### 113092 Includes:

- HTLS-6K Hydraulic Auger Drive (113078)
- Belltec Universal Skid-steer Mount (QT100)
- 1/2" x 96" Hose Kit with Faster Flat Face Couplings (111385)

\*All values are theoretical. Actual performance may vary.



## HTLS-7K

113082  
113093 (KIT)

Dimensions (Drive only)	11 x 11 x 31 in	Gear Train Type	Planetary
Weight Drive/Kit	236 lbs/363 lbs	Min./Max. Flow	10-20 GPM
Output Shaft Size	2-in Hex	Max. Continuous PSI	3000 PSI
Max. Dia. Dirt/Rock	36 in/36 in	Max. Intermittent PSI	3500 PSI

SPEED OUTPUT*	
10 GPM	14 RPM
15 GPM	21 RPM
20 GPM	28 RPM
25 GPM	—

TORQUE OUTPUT*	
2000 PSI	4438 ft. lbs.
2500 PSI	5548 ft. lbs.
3000 PSI	6657 ft. lbs.
3500 PSI	7767 ft. lbs.

### 113082 Includes:

- Auger drive only. Attachment platform & hose kit not included.

### 113093 Includes:

- HTLS-7K Hydraulic Auger Drive (113082)
- Belltec Universal Skid-steer Mount (QT100)
- 1/2" x 96" Hose Kit with Faster Flat Face Couplings (111385)

\*All values are theoretical. Actual performance may vary.



## HTLS-10K

113077  
113094 (KIT)

Dimensions (Drive only)	14 x 14 x 33 in	Gear Train Type	Planetary
Weight Drive/Kit	299 lbs/426 lbs	Min./Max. Flow	15-30 GPM
Output Shaft Size	2-1/2 in Hex	Max. Continuous PSI	3000 PSI
Max. Dia. Dirt/Rock	48 in/48 in	Max. Intermittent PSI	3500 PSI

SPEED OUTPUT*	
15 GPM	13 RPM
20 GPM	18 RPM
25 GPM	22 RPM
30 GPM	26 RPM

TORQUE OUTPUT*	
2000 PSI	6981 ft. lbs.
2500 PSI	8726 ft. lbs.
3000 PSI	10471 ft. lbs.
3500 PSI	12216 ft. lbs.

### 113077 Includes:

- Auger drive only. Attachment platform & hose kit not included.

### 113094 Includes:

- HTLS-10K Hydraulic Auger Drive (113077)
- Belltec Universal Skid-steer Mount (QT100)
- 1/2" x 96" Hose Kit with Faster Flat Face Couplings (111385)

\*All values are theoretical. Actual performance may vary.



# EQUIPMENT MOUNTS

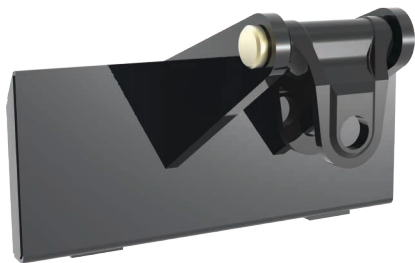


## TH-100

Telescoping Universal Skid-steer Mount

th100

The TH-100 Telescoping Universal Skid-steer Mount quickly interfaces Belltec hydraulic auger drives with equipment that utilizes a universal skid-steer mount. The telescoping boom facilitates the use of longer auger bits or extensions, and it improves the operator's visibility by extending the drive out an additional 65 or 102 inches away from the cab.



## QT-200

Universal Mini Skid-steer Mount

qt200

The QT-200 Universal Mini Skid-steer Mount quickly interfaces Belltec hydraulic auger drives with equipment that utilizes a universal mini skid-steer mount such as modern mini skid-steer loaders. The QT-200 features a center-mounted swivel and cradle.



## QT-100

Universal Skid-steer Mount

qt100

The QT-100 Universal Skid-steer Mount quickly interfaces Belltec hydraulic auger drives with equipment that utilizes a universal skid-steer mount such as modern skid-steer loaders, track loaders, telehandlers, or tractors. The QT-100 features a center-mounted swivel and cradle.



## QT-101

Offset Universal Skid-steer Mount

qt101

The QT-101 Offset Universal Skid-steer Mount quickly interfaces Belltec hydraulic auger drives with equipment that utilizes a universal skid-steer mount such as modern skid-steer loaders, track loaders, telehandlers, or tractors. The QT-101 features a right-hand mounted swivel and cradle to improve the operator's visibility.



## QT-103

Offset Euro/Global Mount

qt103

The QT-103 Offset Euro/Global Skid-steer Mount quickly interfaces Belltec hydraulic auger drives with equipment that utilizes a euro/global skid-steer mount such as modern skid-steer loaders, track loaders, telehandlers, or tractors. The QT-103 features a right-hand mounted swivel and cradle to improve the operator's visibility.



## QT-108

### Offset John Deere Mount

qt108

The QT-108 Offset John Deere Mount quickly interfaces Belltec hydraulic auger drives with John Deere compact track loaders, skid-steer loaders, tractor loaders, and wheel loaders (200 to 500 series models). The QT-108 features a right-hand mounted swivel and cradle to improve the operator's visibility.



## QT-1400

### Ballasted Universal Skid-steer Mount

qt1400

The QT-1400 Ballasted Skid-steer Mount quickly interfaces Belltec hydraulic augers drives with equipment that utilizes a universal skid-steer mount. The QT-1400 is ballasted to 1400 lbs to increase down pressure and dramatically improve drilling efficiency.

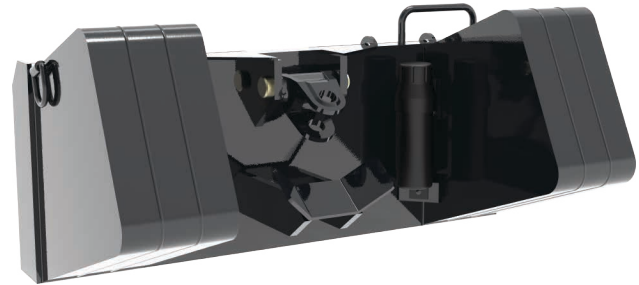


## QT-1900

### Ballasted Universal Skid-steer Mount

qt1900

The QT-1900 Ballasted Skid-steer Mount quickly interfaces Belltec hydraulic augers drives with equipment that utilizes a universal skid-steer mount. The QT-1900 is ballasted to 1900 lbs to increase down pressure and dramatically improve drilling efficiency.



## QT-2400

### Ballasted Universal Skid-steer Mount

qt2400

The QT-2400 Ballasted Universal Skid-steer Mount quickly interfaces Belltec hydraulic augers drives with equipment that utilizes a universal skid-steer mount. The QT-2400 is ballasted to 2400 lbs to increase down pressure and dramatically improve drilling efficiency.



## QH-100

### Universal Weld-on Mount

qh100

When welded unto the proper backhoe or excavator quick-attach blank, the QH-100 Universal Weld-on Mount quickly interfaces Belltec hydraulic auger drives with any backhoe or excavator. Professional installation is recommended. Quick-attach blank is not included.



## LB-410

### Loader Bucket Mount

lb410

The LB-410 Loader Bucket Mount enables operators to install a Belltec hydraulic auger drive on tractors with a non-detachable loader bucket. The LB-410 welds or bolts directly to the side of the loader bucket to improve the operator's visibility and does not disrupt normal loader bucket operations. Professional installation is recommended.



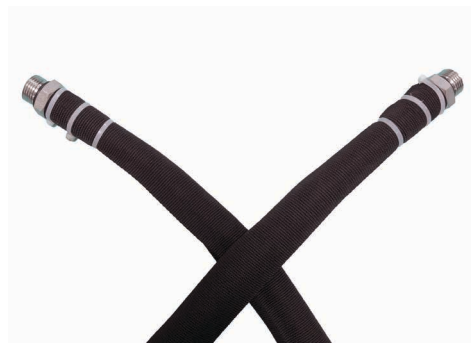


## CUSTOM-BUILT SWIVEL MOUNTS

For Backhoe, Excavators, and Compact Excavators

Custom-built swivel mounts are available for most makes and models. To order a custom-built swivel mount for your equipment, contact a Belltec sales representative, and provide the following information:

Equipment Make and Model, Pin Diameter, Dipper Stick Width



## HOSE KIT

1/2-in x 96-in Hose Kit with 10MB Hose Fittings

111383

This hydraulic hose kit includes two 1/2-in x 96-in hydraulic hoses fitted with 10MB hose fittings, constructed with seamless heat and oil resistant synthetic rubber tubing, and wrapped with an abrasion and weather-resistant nylon cover. Each hose is reinforced with two braids of high tensile steel wire and has a working pressure of 4000 psi.



## HOSE KIT

1/2-in x 96-in Hose Kit with Flat-Face Couplings

111385

This hydraulic hose kit includes two 1/2-in x 96-in hydraulic hoses fitted with Faster Flat-Face Couplings, constructed with seamless heat and oil resistant synthetic rubber tubing, and wrapped with an abrasion and weather-resistant nylon cover. Each hose is reinforced with two braids of high tensile steel wire and has a working pressure of 4000 psi.



## HOSE KIT

1/2-in x 25-ft Hose Kit for Tractor Loader

111381

This hydraulic hose kit includes two 1/2-in x 25-ft hydraulic hoses fitted with Pioneer style couplings, constructed with seamless heat and oil resistant synthetic rubber tubing, and wrapped with an abrasion and weather-resistant nylon cover. Each hose is reinforced with two braids of high tensile steel wire and has a working pressure of 4000 psi.



## COUPLING

Faster Flat Face Coupling - Male

111387

Faster Flat-Face Couplings enable the operator to connect or disconnect attachment platforms quickly. These couplings offer a real maximum working pressure of 35 MPa and feature zinc-nickel plating. The flat valve shut-off system minimizes the risk of contamination and spillage.



## COUPLING

Faster Flat Face Coupling - Female

111386

Faster Flat-Face couplings enable the operator to connect or disconnect attachment platforms quickly. These couplings offer a real maximum working pressure of 35 MPa and feature zinc-nickel plating. The flat valve shut-off system minimizes the risk of contamination and spillage.

# AUGER EXTENSIONS & DRIVE ADAPTORS



2-IN HEX FIXED-LENGTH EXTENSION		
Length	List Price	Part No.
24	**	EH200024F
36	**	EH200036F
48	**	EH200048F
60	**	EH200060F
72	**	EH200072F



2-IN ROUND FIXED-LENGTH EXTENSION		
Length	List Price	Part No.
24	**	ER200024F
36	**	ER200036F
48	**	ER200048F



2.5-IN ROUND FIXED-LENGTH EXTENSION		
Length	List Price	Part No.
24	**	ER250024F
36	**	ER250036F
48	**	ER250048F
60	**	ER250060F
72	**	ER250072F



2-IN HEX VARIABLE-LENGTH EXTENSION		
Length	List Price	Part No.
24	**	EH200024
36	**	EH200036
48	**	EH200048
60	**	EH200060
72	**	EH200072



2-IN ROUND VARIABLE-LENGTH EXTENSION		
Length	List Price	Part No.
24	**	ER200024
36	**	ER200036
48	**	ER200048



2.5-IN ROUND VARIABLE-LENGTH EXTENSION		
Length	List Price	Part No.
24	**	ER250024
36	**	ER250036
48	**	ER250048



2-IN HEX HD TUBULAR EXTENSION		
Length	List Price	Part No.
24	**	EHHD200024
30	**	EHHD200030
36	**	EHHD200036
48	**	EHHD200048
60	**	EHHD200060
72	**	EHHD200072
84	**	EHHD200084
96	**	EHHD200096
120	**	EHHD200120
144	**	EHHD200144



DRIVE SHAFT ADAPTERS		
List Price	Description	Part No.
**	2-in Hex Female to 2-in Round Male	AH200R200
**	2-in Hex Female to 2.5-in Round Male	AH200R250
**	2-in Hex Female to 2.5-in Round Male with 1/2-in Bolt Hole	AH200R250D
**	2-in Hex Female to 2-in Square Male	AH200SQ200
**	2.5-in Hex Female to 2-in Hex Male with Shearbolt Protection	AH250H200
**	2-in Round Male to 2.5-in Round Male	AR200R250
**	2-in Round Female to 2-in Hex Male	AR200H200
**	2.5-in Round Female to 2-in Round Male	AR256R200
**	2.5-in Round Female to 2-in Hex Male	AR256H200



# BELLTEC™ AUGER SOLUTIONS

Belltec offers the most comprehensive line of high-performance augers on the market to maximize performance in any drilling application or environment, and each Belltec auger is standard-built with first-rate components for added quality and value.

- Built with a premium A500 structural steel stem
- Features our patented AugerGuard™ Coupling
- Top-to-bottom heavy-duty flighting
- Boring heads, pilots, and teeth are cast with premium alloy steel and undergo an advanced heat-treatment process.

To find an auger's price and part number:

1. Select the auger drive's output shaft type.

2. Select bore diameter.

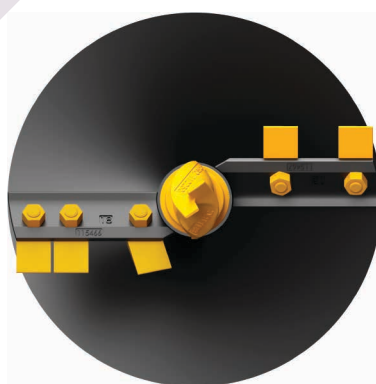
48-INCH OAL   SEMI-DOUBLE FLIGHT   STANDARD DIRT TEETH				
Diameter	List Price	2-in Round	2.5-in Round	2-in Hex
6	\$260	A06061A	A06061B	A06061C
9	\$360	A09061A	A09061B	A09061C

Note: most Belltec auger drives utilize a 2-in hex output shaft.

## DCA-SERIES

DCA-Series Auger are a cost-effective solution for drilling in displaceable soils like sand, silt, or clay. DCA augers feature a hardened cast boring to withstand the demands of repeated use.

- Bolt-on tooth design for a secure fit
- Options available in diameters from 4.5-in to 36-in
- Available in 48-in or 54-in overall lengths
- Available in semi-double or double flight designs
- Built with 5/16-in flighting and a 3.5-in diameter pilot



48-INCH OAL   SEMI-DOUBLE FLIGHT   STANDARD DIRT TEETH				
Diameter	List Price	2-in Round	2.5-in Round	2-in Hex
6	**	A06061A	A06061B	A06061C
9	**	A09061A	A09061B	A09061C
12	**	A12061A	A12061B	A12061C
15	**	A15061A	A15061B	A15061C
18	**	A18061A	A18061B	A18061C
24	**	A24061A	A24061B	A24061C

48-INCH OAL   DOUBLE FLIGHT   STANDARD DIRT TEETH				
Diameter	List Price	2-in Round	2.5-in Round	2-in Hex
9	**	A09060A	A09060B	A09060C
12	**	A12060A	A12060B	A12060C
15	**	A15060A	A15060B	A15060C
18	**	A18060A	A18060B	A18060C
24	**	A24060A	A24060B	A24060C
30	**	A30060A	A30060B	A30060C
36	**	A36060A	A36060B	A36060C

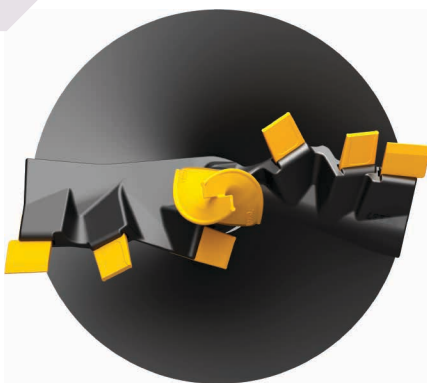
54-INCH OAL   SEMI-DOUBLE FLIGHT   STANDARD DIRT TEETH				
Diameter	List Price	2-in Round	2.5-in Round	2-in Hex
9	**	A09063A	A09063B	A09063C
12	**	A12063A	A12063B	A12063C
15	**	A15063A	A15063B	A15063C
18	**	A18063A	A18063B	A18063C
24	**	A24063A	A24063B	A24063C

54-INCH OAL   DOUBLE FLIGHT   STANDARD DIRT TEETH				
Diameter	List Price	2-in Round	2.5-in Round	2-in Hex
9	**	A09062A	A09062B	A09062C
12	**	A12062A	A12062B	A12062C
15	**	A15062A	A15062B	A15062C
18	**	A18062A	A18062B	A18062C
24	**	A24062A	A24062B	A24062C
30	**	A30062A	A30062B	A30062C
36	**	A36062A	A36062B	A36062C

# SDA-SERIES

SDA-Series Auger are reliable, all-around tools routine drilling in displaceable soils and fractured rock. The improved boring head design and hefty 4.5-inch pilot offer enhanced long-term performance and durability.

- Drive-in tooth design for quick servicing
- Options available in diameters from 4.5 to 36 inches
- Available in 48-in or 54-in overall lengths
- Available in single or double flight designs
- Built with 5/16-in flighting



48-INCH OAL   SINGLE FLIGHT   STANDARD DIRT TEETH				
Diameter	List Price	2-in Round	2.5-in Round	2-in Hex
4.5	**	A04531A	A04531B	A04531C
6	**	A06031A	A06031B	A06031C
8	**	A08031A	A08031B	A08031C
9	**	A09031A	A09031B	A09031C
10	**	A10031A	A10031B	A10031C
12	**	A12031A	A12031B	A12031C
15	**	A15031A	A15031B	A15031C
18	**	A18031A	A18031B	A18031C
20	**	A20031A	A20031B	A20031C
24	**	A24031A	A24031B	A24031C
30	**	A30031A	A30031B	A30031C
36	**	A36031A	A36031B	A36031C

48-INCH OAL   SINGLE FLIGHT   TUNGSTEN CARBIDE DIRT TEETH				
Diameter	List Price	2-in Round	2.5-in Round	2-in Hex
4.5	**	A04533A	A04533B	A04533C
6	**	A06033A	A06033B	A06033C
8	**	A08033A	A08033B	A08033C
9	**	A09033A	A09033B	A09033C
10	**	A10033A	A10033B	A10033C
12	**	A12033A	A12033B	A12033C
15	**	A15033A	A15033B	A15033C
18	**	A18033A	A18033B	A18033C
20	**	A20033A	A20033B	A20033C
24	**	A24033A	A24033B	A24033C
30	**	A30033A	A30033B	A30033C
36	**	A36033A	A36033B	A36033C

48-INCH OAL   DOUBLE FLIGHT   STANDARD DIRT TEETH				
Diameter	List Price	2-in Round	2.5-in Round	2-in Hex
8	**	A08011A	A08011B	A08011C
9	**	A09011A	A09011B	A09011C
10	**	A10011A	A10011B	A10011C
12	**	A12011A	A12011B	A12011C
15	**	A15011A	A15011B	A15011C
18	**	A18011A	A18011B	A18011C
20	**	A20011A	A20011B	A20011C
24	**	A24011A	A24011B	A24011C
30	**	A30011A	A30011B	A30011C
36	**	A36011A	A36011B	A36011C

48-INCH OAL   DOUBLE FLIGHT   TUNGSTEN CARBIDE DIRT TEETH				
Diameter	List Price	2-in Round	2.5-in Round	2-in Hex
8	**	A08015A	A08015B	A08015C
9	**	A09015A	A09015B	A09015C
10	**	A10015A	A10015B	A10015C
12	**	A12015A	A12015B	A12015C
15	**	A15015A	A15015B	A15015C
18	**	A18015A	A18015B	A18015C
20	**	A20015A	A20015B	A20015C
24	**	A24015A	A24015B	A24015C
30	**	A30015A	A30015B	A30015C
36	**	A36015A	A36015B	A36015C

54-INCH OAL   SINGLE FLIGHT   STANDARD DIRT TEETH				
Diameter	List Price	2-in Round	2.5-in Round	2-in Hex
4.5	**	A04530A	A04530B	A04530C
6	**	A06030A	A06030B	A06030C
8	**	A08030A	A08030B	A08030C
9	**	A09030A	A09030B	A09030C
10	**	A10030A	A10030B	A10030C
12	**	A12030A	A12030B	A12030C

54-INCH OAL   SINGLE FLIGHT   STANDARD DIRT TEETH				
Diameter	List Price	2-in Round	2.5-in Round	2-in Hex
15	**	A15030A	A15030B	A15030C
18	**	A18030A	A18030B	A18030C
20	**	A20030A	A20030B	A20030C
24	**	A24030A	A24030B	A24030C
30	**	A30030A	A30030B	A30030C
36	**	A36030A	A36030B	A36030C

Continued »

# BHD-SERIES

BHD-Series Augers free you to focus on the big pictures. The 4.5-in pilot and patented, severe-duty boring head minimize hang-ups in the hardest displaceable soils by powering through gravel, cobble, or fractured rock.

- Bolt-on tooth design for a secure fit
- Options available in diameters from 6 to 48 inches
- Available in 48-in or 54-in overall lengths
- Available in single or double flight designs
- Built with 5/16-in flighting



48-INCH OAL   SINGLE FLIGHT   STANDARD DIRT TEETH				
Diameter	List Price	2-in Round	2.5-in Round	2-in Hex
6	**	A06036A	A06036B	A06036C
8	**	A08036A	A08036B	A08036C
9	**	A09036A	A09036B	A09036C
10	**	A10036A	A10036B	A10036C
12	**	A12036A	A12036B	A12036C
15	**	A15036A	A15036B	A15036C
18	**	A18036A	A18036B	A18036C
20	**	A20036A	A20036B	A20036C
24	**	A24036A	A24036B	A24036C
30	**	A30036A	A30036B	A30036C
36	**	A36036A	A36036B	A36036C
42	**	A42036A	A42036B	A42036C
48	**	A48036A	A48036B	A48036C

48-INCH OAL   SINGLE FLIGHT   TUNGSTEN CARBIDE DIRT TEETH				
Diameter	List Price	2-in Round	2.5-in Round	2-in Hex
6	**	A06037A	A06037B	A06037C
8	**	A08037A	A08037B	A08037C
9	**	A09037A	A09037B	A09037C
10	**	A10037A	A10037B	A10037C
12	**	A12037A	A12037B	A12037C
15	**	A15037A	A15037B	A15037C
18	**	A18037A	A18037B	A18037C
20	**	A20037A	A20037B	A20037C
24	**	A24037A	A24037B	A24037C
30	**	A30037A	A30037B	A30037C
36	**	A36037A	A36037B	A36037C
42	**	A42037A	A42037B	A42037C
48	**	A48037A	A48037B	A48037C

48-INCH OAL   DOUBLE FLIGHT   STANDARD DIRT TEETH				
Diameter	List Price	2-in Round	2.5-in Round	2-in Hex
8	**	A08038A	A08038B	A08038C
9	**	A09038A	A09038B	A09038C
10	**	A10038A	A10038B	A10038C
12	**	A12038A	A12038B	A12038C
15	**	A15038A	A15038B	A15038C
18	**	A18038A	A18038B	A18038C
20	**	A20038A	A20038B	A20038C
24	**	A24038A	A24038B	A24038C
30	**	A30038A	A30038B	A30038C
36	**	A36038A	A36038B	A36038C
42	**	A42038A	A42038B	A42038C
48	**	A48038A	A48038B	A48038C

48-INCH OAL   DOUBLE FLIGHT   TUNGSTEN CARBIDE DIRT TEETH				
Diameter	List Price	2-in Round	2.5-in Round	2-in Hex
8	**	A08039A	A08039B	A08039C
9	**	A09039A	A09039B	A09039C
10	**	A10039A	A10039B	A10039C
12	**	A12039A	A12039B	A12039C
15	**	A15039A	A15039B	A15039C
18	**	A18039A	A18039B	A18039C
20	**	A20039A	A20039B	A20039C
24	**	A24039A	A24039B	A24039C
30	**	A30039A	A30039B	A30039C
36	**	A36039A	A36039B	A36039C
42	**	A42039A	A42039B	A42039C
48	**	A48039A	A48039B	A48039C

## BULLET SERIES

Bullet Series Augers are specialized at cutting through tough cobble, boulders, fractured, or solid rock. The advanced, rock-crushing boring head design utilizes C1HD Plus™ Bullet Teeth arranged at optimal cutting angles.

- Outfitted with C1HD Plus™ Bullet Teeth
- Convenient wear indicator strips on boring head\*
- Reinforced 3/4-in boring head flight\*
- Options available in diameters from 4.5 to 36 inches
- Built with 5/16-in flighting and a 5-in diameter pilot

\*Feature may not be available on augers with a 6-in diameter or smaller.



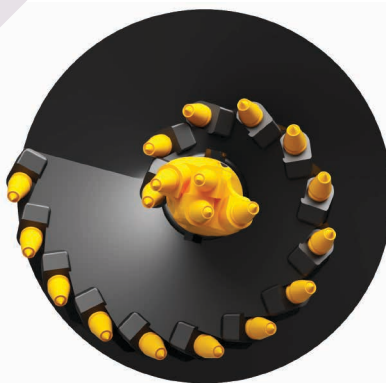
48-INCH OAL   SINGLE FLIGHT   TUNGSTEN CARBIDE BULLET TEETH				
Diameter	List Price	2-in Round	2.5-in Round	2-in Hex
4.5	**	A04518A	A04518B	A04518C
6	**	A06018A	A06018B	A06018C
8	**	A08005A	A08005B	A08005C
9	**	A09005A	A09005B	A09005C
10	**	A10005A	A10005B	A10005C
12	**	A12005A	A12005B	A12005C
15	**	A15005A	A15005B	A15005C
18	**	A18005A	A18005B	A18005C
24	**	A24005A	A24005B	A24005C
30	**	A30005A	A30005B	A30005C
36	**	A36005A	A36005B	A36005C

48-INCH OAL   DOUBLE FLIGHT   TUNGSTEN CARBIDE BULLET TEETH				
Diameter	List Price	2-in Round	2.5-in Round	2-in Hex
8	**	A08008A	A08008B	A08008C
9	**	A09008A	A09008B	A09008C
10	**	A10008A	A10008B	A10008C
12	**	A12008A	A12008B	A12008C
15	**	A15008A	A15008B	A15008C
18	**	A18008A	A18008B	A18008C
24	**	A24008A	A24008B	A24008C
30	**	A30008A	A30008B	A30008C
36	**	A36008A	A36008B	A36008C

## SPIRAL SERIES

Spiral Series Augers will increase your productivity when you face hard ground. Its earth-grinding conical design and aggressive arrangement of C1HD Plus™ Bullet Teeth will pulverize concrete, fracturable, and solid rock.

- Ultra-performance, hand-laid boring head
- Continuous Stooddy 121-G hardfacing
- Continuous 5/8-in thick flighting
- Options available in diameters from 9 to 36 inches
- Built with 5-in diameter pilot



48-INCH OAL   SINGLE FLIGHT   TUNGSTEN CARBIDE BULLET TEETH				
Diameter	List Price	2-in Round	2.5-in Round	2-in Hex
9	**	A09040A	A09040B	A09040C
12	**	A12040A	A12040B	A12040C
15	**	A15040A	A15040B	A15040C
18	**	A18040A	A18040B	A18040C
24	**	A24040A	A24040B	A24040C
30	**	A30040A	A30040B	A30040C
36	**	A36040A	A36040B	A36040C



### MORE DRILLING, LESS MAINTENANCE

Bullet Series and Spiral Series augers now equip the all-new C1HD Plus™ Bullet Teeth, which have more carbide and last longer than ever before.

## SPECIALTY

**Tree and Shrub Augers** - A variant of DCA-Series Augers, Belltec Tree and Shrub Augers are a cost-effective solution for mechanically digging holes to plant trees or shrubs. Options are available in diameters from 18 to 48 inches.

**Belltec Puff Augers** - Belltec Puff Augers are specially designed to bore holes into hard ground for installing T-posts. Belltec Puff Augers feature a 1-5/8 inch solid steel shaft and a replaceable 2-in carbide head that effeciently cuts through hard dirt and rock.

48-INCH OAL   DOUBLE FLIGHT   STANDARD DIRT TEETH				
Diameter	List Price	2-in Round	2.5-in Round	2-in Hex
18	**	A09027A	A09027B	A09027C
24	**	A12027A	A12027B	A12027C
30	**	A15027A	A15027B	A15027C
36	**	A18027A	A18027B	A18027C
42	**	A20027A	A20027B	A20027C
48	**	A24027A	A24027B	A24027C



48-INCH OAL   2-INCH TUNGSTEN CARBIDE PUFF AUGER				
Diameter	List Price	2-in Round	2.5-in Round	2-in Hex
2	**	A02005A	A02005B	A02005C

## CONSUMABLES

TEETH		
List Price	Description	Part No.
**	Standard Bolt-on Dirt Tooth (DCA, Tree)	112087
**	35 Dirt Tooth (SDA, BHD)	112008
**	35G Dirt GuageTooth (SDA, BHD, SSA)	112026
**	5T30 Dirt Spike Tooth (SSA)	112010
**	Tungsten Carbide Dirt Tooth (SDA, BHD)	115323
**	C1HD Plus™ Teeth (Bullet, Spiral, SRA, RAD)	115185

PILOTS		
List Price	Description	Part No.
**	SB35-SQ Pilot (DCA, Tree)	112250
**	SB45-SQ Pilot (SDA, SSA)	112252
**	FD-475 Pilot (BHD)	115362
**	BT-500S Pilot (Bullet, Spiral, RAD)	115052
**	CP-16 Pilot (Puff)	115316

## PRICING GUIDE

To price a hydraulic drive unit:

Select a drive unit or kit (pp. 2-5)	\$ _____
Select an equipment mount (pp. 6-8)	\$ _____
Select a hose kit (p. 8)	\$ _____
Select an auger (pp. 10-14)	\$ _____
Select an extension or adapter (p. 9)	\$ _____
Select replacement Teeth an Pilots (p. 14)	\$ _____
Freight	\$ _____
Total	\$ _____

To price a TM-48 Belltec Digger:

Select a TM-48 model (p. 15)	\$ _____
Select an Auger (p. 15)	\$ _____
Select replacement Teeth an Pilots (p. 14)	\$ _____
Freight	\$ _____
Total	\$ _____



# TM-48 BELLTEC DIGGER

For over thirty years, the legendary TM-48 Belltec Digger has helped tractor owners dig post holes quickly and accurately by transforming their three-point tractors into complete drilling machines. TM-48 models are available for category 1, 2, and 3 hitch systems.

Part No.	Description
TM48-HTL-C1	TM-48 (Cat. 1)
TM48-HTL-C2	TM-48 (Cat. 2)
TM48-HTL-C3	TM-48 (Cat. 3)
TM48-HTL-GRS-C1	TM-48 w/Leveling Cylinders (Cat. 1)
TM48-HTL-GRS-C2	TM-48 w/Leveling Cylinders (Cat. 2)
TM48-HTL-GRS-C3	TM-48 w/Leveling Cylinders (Cat. 3)
100320	Category 2 Hitch Spacer Kit



SSA-SERIES DIRT AUGERS		
Diameter	List Price	Part No.
6	**	A06010
8	**	A08010
9	**	A09010
10	**	A10010
12	**	A12010
15	**	A15010
18	**	A18010

SPIRAL SERIES ROCK AUGERS		
Diameter	List Price	Part No.
9	**	A09040
12	**	A12040
15	**	A15040
18	**	A18040

SRA-SERIES CLUSTER HEADS		
Diameter	List Price	Part No.
6	**	A06016
9	**	A09016

RAD-SERIES ROCK AUGERS		
Diameter	List Price	Part No.
8	**	A08006
9	**	A09006
10	**	A10006
12	**	A12006
15	**	A15006
18	**	A18006

2-INCH TUNGSTEN CARBIDE PUFF AUGER		
Diameter	List Price	Part No.
2	**	A02005

**CONTACT BELLTEC**

# 1-800-242-9410

[sales@belltec.net](mailto:sales@belltec.net)  
[www.belltec.net](http://www.belltec.net)



# LIMITED WARRANTY

## Belltec General Product Limited Warranty

Every Belltec product is warranted to be free of defects in material and workmanship for a period of ONE YEAR from the original date of purchase. Certain products referenced below have more extended warranties. Should a problem develop during the one-year period, return the COMPLETE product, freight prepaid by the user, to Belltec Industries. Belltec Industries reserves the right to inspect all instances of a problem before Belltec Industries replaces the product or performs any repairs or modifications. If inspection shows the problem is caused by defective workmanship or material, Belltec Industries will (at our option) repair, modify, or replace the product without charge.

\*See below for limitations and exclusions applicable to Belltec warranties



### Belltec Limited 3-Year Warranty, HTLS-Series Hydraulic Auger Drive

Every Belltec HTLS-Series Hydraulic Auger Drive is warranted to be free of defects in material and workmanship for a period of THREE YEARS from the original date of purchase. Should a problem develop during the three-year period, return the COMPLETE HTLS-Series Hydraulic Auger Drive, freight prepaid by the user, to Belltec Industries. Belltec Industries reserves the right to inspect all instances of a problem before Belltec Industries replaces the product or performs any repairs or modifications. If inspection shows the problem is caused by defective workmanship or material, Belltec Industries will (at our option) repair, modify, or replace the HTLS-Series Hydraulic Auger Drive without charge.

\*See below for limitations and exclusions applicable to Belltec warranties



### Belltec Limited 4-Year Warranty, LC-Series Hydraulic Auger Drive

Every Belltec LC-Series Hydraulic Auger Drive is warranted to be free of defects in material and workmanship for a period of FOUR YEARS from the original date of purchase. Should a problem develop during the four-year period, return the COMPLETE LC-Series Hydraulic Auger Drive, freight prepaid by the user, to Belltec Industries. Belltec Industries reserves the right to inspect all instances of a problem before Belltec Industries replaces the product or performs any repairs or modifications. If inspection shows the problem is caused by defective workmanship or material, Belltec Industries will (at our option) repair, modify, or replace the LC-Series Hydraulic Auger Drive without charge.

\*See below for limitations and exclusions applicable to Belltec warranties



### Belltec Limited 5-Year Warranty, M-Series Hydraulic Auger Drive

Every Belltec M-Series Hydraulic Auger Drive is warranted to be free of defects in material and workmanship for a period of FIVE YEARS from the original date of purchase. Should a problem develop during the five-year period, return the COMPLETE M-Series Hydraulic Auger Drive, freight prepaid by the user, to Belltec Industries. Belltec Industries reserves the right to inspect all instances of a problem before Belltec Industries replaces the product or performs any repairs or modifications. If inspection shows the problem is caused by defective workmanship or material, Belltec Industries will (at our option) repair, modify, or replace the M-Series Hydraulic Auger Drive without charge.

\*See below for limitations and exclusions applicable to Belltec warranties



### Belltec Limited 6-Year Warranty, H-Series Hydraulic Auger Drive

Every Belltec H-Series Hydraulic Auger Drive is warranted to be free of defects in material and workmanship for a period of SIX YEARS from the original date of purchase. Should a problem develop during the six-year period, return the COMPLETE H-Series Hydraulic Auger Drive, freight prepaid by the user, to Belltec Industries. Belltec Industries reserves the right to inspect all instances of a problem before Belltec Industries replaces the product or performs any repairs or modifications. If inspection shows the problem is caused by defective workmanship or material, Belltec Industries will (at our option) repair, modify, or replace the H-Series Hydraulic Auger Drive without charge.

\*See below for limitations and exclusions applicable to Belltec warranties

## Belltec Warranty Limitations and Exclusions

All warranties are voided if:

- Repairs have been made or attempted by others
- Repairs are required because of normal wear and tear
- The tool has been abused, misused, improperly maintained or operated.
- Alterations have been made to the tool.

IN NO EVENT SHALL BELLTEC INDUSTRIES BE LIABLE FOR (A) ANY INDIRECT, INCIDENTAL, PUNITIVE, OR CONSEQUENTIAL DAMAGES ARISING FROM THE SALE OR USE OF THE PRODUCTS SOLD UNDER THESE WARRANTIES, OR (B) ANY AMOUNT IN EXCESS OF THE AMOUNT ACTUALLY PAID TO BELLTEC INDUSTRIES FOR THE PRODUCTS SOLD HEREUNDER. THIS LIMITATION APPLIES BOTH DURING AND AFTER THE TERMS OF THE WARRANTY.

BELLTEC INDUSTRIES DISCLAIMS ALL OTHER WARRANTIES, WHETHER EXPRESSED OR IMPLIED, INCLUDING WITHOUT LIMITATION, THE IMPLIED WARRANTIES OR "MERCHANTABILITY" AND "FITNESS FOR A SPECIFIC PURPOSE." ALL MATERIALS PROVIDED HEREUNDER ARE PROVIDED "AS IS" AND "WITH ALL FAULT."

# DISCLAIMER

Belltec Industries, Inc. reserves the right to make changes or improvements on its products without incurring an additional obligation, including any obligation to make corresponding changes or improvements to products previously manufactured or sold. Belltec reserves the right to discontinue products at any time without notice.

All product names, logos, and brands are the property of their respective owners. All company product names and service names used in these materials are for identification purposes only. The use of these names, logos, and brands does not imply endorsement.

All product images displayed in the catalog are the property of Belltec Industries, Inc. and shall not be duplicated or reproduced without the express written consent of Belltec Industries, Inc.

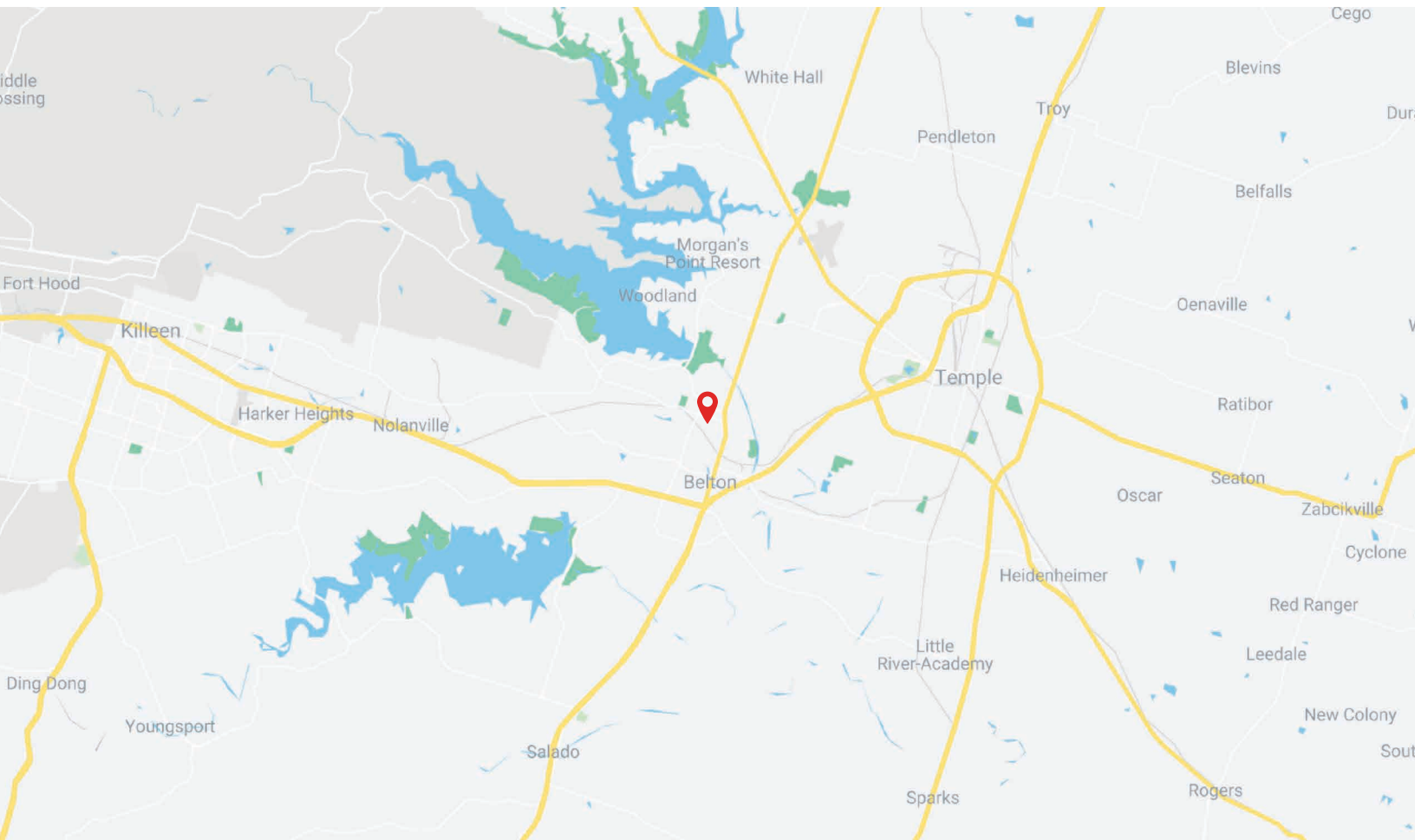
All product images shown are for illustration purposes only and may not be an exact representation of the product.



**Know what's below.  
Call 811 before you dig.**







Belltec Industries, Inc.  
PO BOX 270  
Belton, TX 76513

1-800-242-9410  
sales@belltec.net  
www.belltec.net

